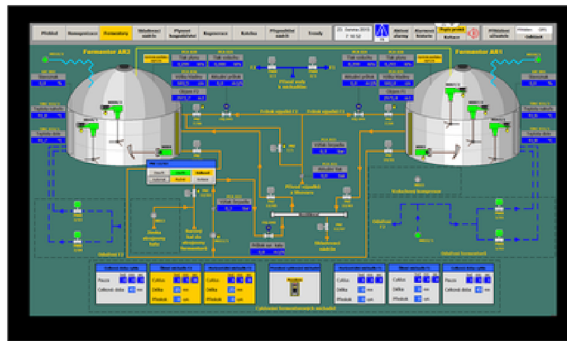


# BIOGAS PLANT

The company's target is to provide comprehensive services related to the construction of biogas plants that process agricultural and municipal feedstock in a turnkey manner.



A biogas plant is a facility for the processing of bio-waste using anaerobic fermentation, the main product of which is biogas, which is further used to produce electricity and heat. For the combustion of biogas we are able to offer and supply both engine and turbine cogeneration. We also offer additional technologies such as - biogas to biomethane treatment, waste heat recovery in the form of dryers, ORC systems, separation, production of concentrated fertilizers, use of solid separate for pellet production, etc.

We supply biogas plants and equipment for wet and dry fermentation technology.

For the construction of biogas plants we use only high quality and proven material, equipment, we follow the established technological procedures. We put emphasis on the functionality of the proposed solution, also in terms of odour elimination.

## What do you gain by the construction of a biogas plant?

- a stable source of income from the sale of electricity or heat
- addressing waste management issues
- quality fertiliser



## As part of the turnkey delivery we provide:

- execution of calculations
- energy balance of raw materials - yield
- calculation of economic return
- design documentation
- implementation of the work according to the design documentation, building permit in the scope and within the agreed timeframe according to the contract
- reconstruction of stations
- optimisation of operations and servicing
- remote management and servicing of equipment
- carrying out activities as required, possibly according to the service contract
- professional consultancy
- preparation of operational documentation
- training of biogas plant operators
- ensuring regular inspections and revisions



GASCONTROL, společnost s r.o.  
Dělnická 883/46  
735 64 Havířov  
Prostřední Suchá  
Czechia  
T: +420 596 496 411  
E: [gascontrol@gascontrol.cz](mailto:gascontrol@gascontrol.cz)  
[www.gascontrol.cz](http://www.gascontrol.cz)

Member of  
**GC** GROUP