

CNG FILLING STATION

S100 – SOLO, DUO

CNG filling station S100 series is compact and powerful device, designed for the refueling of passenger cars and buses on natural gas or bio methane.

CNG filling station is in accordance with the requirements of TPG 304 02. The operator of the filling station is required to have the authorization issued by the organization of state professional supervision – TIČR, for filling of compressive vessels for gases (including pressure station) in accordance with ČÚBP and ČBÚ Decree no. 21/1979 Coll. as amended.



Description of filling technology

The inlet natural gas passes through the drying device equipped with a molecular sieve, where the moisture is removed, and the filtration device for final cleaning of the gas. In the compressor gas is compressed to a pressure of 27 to 30 MPa. Under this pressure is delivered into the bottle storage or directly into the dispensing device (dispenser). Into the pressure tank of the vehicle is delivered through the filling hose, and after reaching the desired pressure of 20-21 MPa in the vehicle tank, the device is automatically switched off. Filling hose is disconnected from the vehicle tank and everything is ready for the next filling.

Model CNG station – building

New shelter is made of aerated concrete structure with a steel frame and metal doors. It is divided into two rooms, a room for technology and a switchboard room. The rooms are mutually gas-tight. The roof is sandwich-type, with an opening for installation of ventilation hole and the building is placed on the previously executed base plate.

TECHNICAL DATA

Type	GC 85 / GC 150	
Suction pressure	0,3 – 0,9 bar	
Delivered quantity	od 84 Nm ³ /h	do 144 Nm ³ /h
Electromotor	30 kW	36 kW
Working pressure	25 - 29 MPa	
Bottle bundle	2 800 l*	
Noise level	65/60 dB (A), 1 m DIN 2151	
Dimension	2,5 x 6,2 x 2,9 m	

* Possible to produce according to customer's requirements (multiples of 80 l or 140 l).

GASCONTROL, společnost s r.o.
Dělnická 883/46
735 64 Havířov
Prostřední Suchá
Czechia
T: +420 596 496 411
E: gascontrol@gascontrol.cz
www.gascontrol.cz

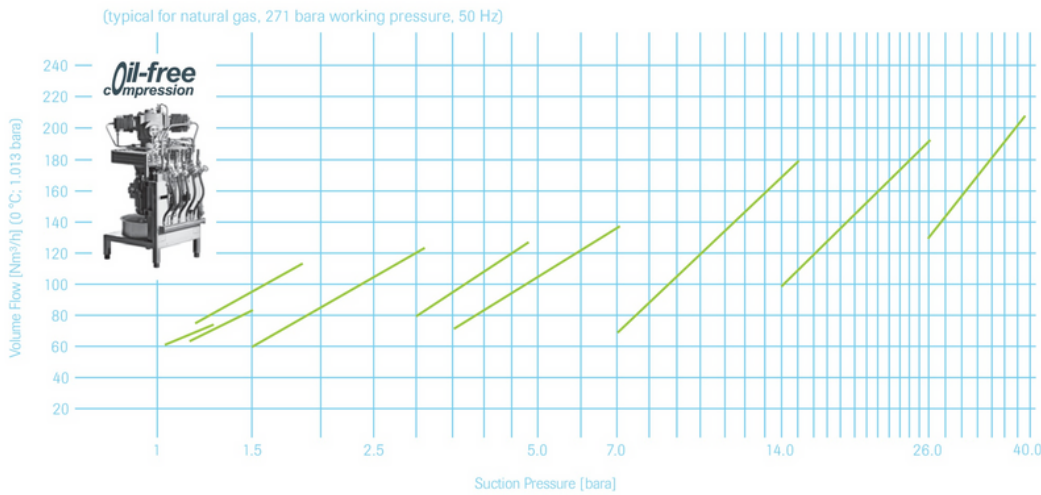
Member of
GC GROUP

CNG FILLING STATION

S100 – SOLO, DUO

GREENFIELD oil free compressors – type DM

The heart of each station is a compressor. The compressor must be suitable for natural gas or bio methane. It must also be adequately dimensioned for the final pressure, which may also be over 300 bara. GREENFIELD DM-compressors are designed for capacities from 80 to 220 Nm³ per hour.



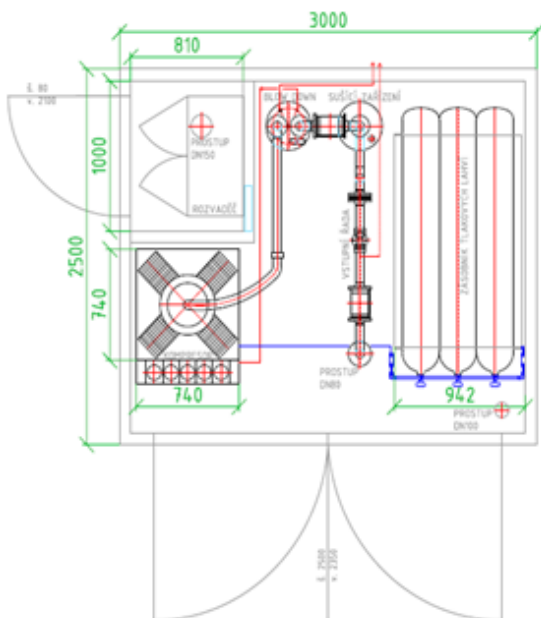
DM-compressor is completely oil-free, hermetically gas-tight and therefore absolutely ecological.

It has a hermetically sealed compressor-motor-unit, requires no dynamic shaft sealing. Therefore, there can be no leakage of methane. Due to the scotch yoke drive and anti-vibration pads the DM has a low vibration and noise level. Due to magnetic coupling the energy losses are small.

Size: 0,9 x 0,75 x 1,6 m (L x W x H); weight: approx. 850 kg

SPECIFICATION

Flow rate (Nm ³ /h)	Compression ratio	Suction pressure	Working pressure	Motor power
80 až 220	2, 3, 4 or 5 stage setting	1,05 - 41 bara abs.	up to 450 bara	30/37 kW



GASCONTROL, společnost s r.o.
 Dělnická 883/46
 735 64 Havířov
 Prostřední Suchá
 Czechia
 T: +420 596 496 411
 E: gascontrol@gascontrol.cz
 www.gascontrol.cz

Member of
GC GROUP