

Gas Transfer Station

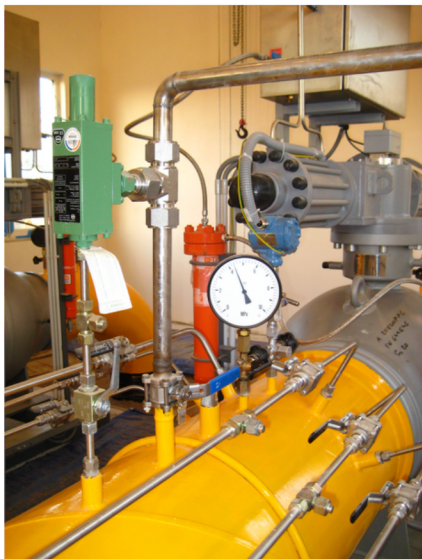
Gas Transfer Stations (GTS) are basically high-capacity control stations that adjust the gas pressure to the normal value in the national network.



Our company participated in the implementation of transfer stations between the transit (transmission) and distribution systems: GTS Štramberk and GTS Děhylov.



Each of these transfer stations has a total capacity of 250 000 m³/h. The construction of the transfer stations took place during the 1980s, after the construction of the DN700 PN64 Říkovice-Příbor-Děhylov HP pipeline. Although at that time it was a modern facility, these stations were already technically and morally obsolete and did not meet the current requirements for operational control of gas supply to the network, both in terms of operation - maintaining the pressure level in the network and not exceeding the daily limits of gas purchase from the gas supplier.



The basic requirement for the reconstruction of the GTS was the modernization of the entire equipment with remote control of the entire station from the regional control room without permanent operation of the GTS. GASCONTROL, s.r.o. , as the general contractor, was involved in the construction of a complex of interconnected equipment that allows unattended, remotely controlled, natural gas regulation to the HP gas network.

GASCONTROL, s.r.o. also participated in the construction of a natural gas transfer station for the Hyundai automotive plant in Nošovice.

The total capacity of this station is 30 000 m³/h.

GASCONTROL, společnost s r.o.
Dělnická 883/46
735 64 Havířov
Prostřední Suchá
Czechia
T: +420 596 496 411
E: gascontrol@gascontrol.cz
www.gascontrol.cz

Member of
GC | GROUP